

INZAI | TKY01

STACK INFRASTRUCTURE OPENS A DATA CENTER CAMPUS IN THE INZAI AREA!

Total 36MW Campus

To further strengthen our strategic market expansion in Japan, we have established the state-of-the-art TKY01 Campus data center in the Inzai area.

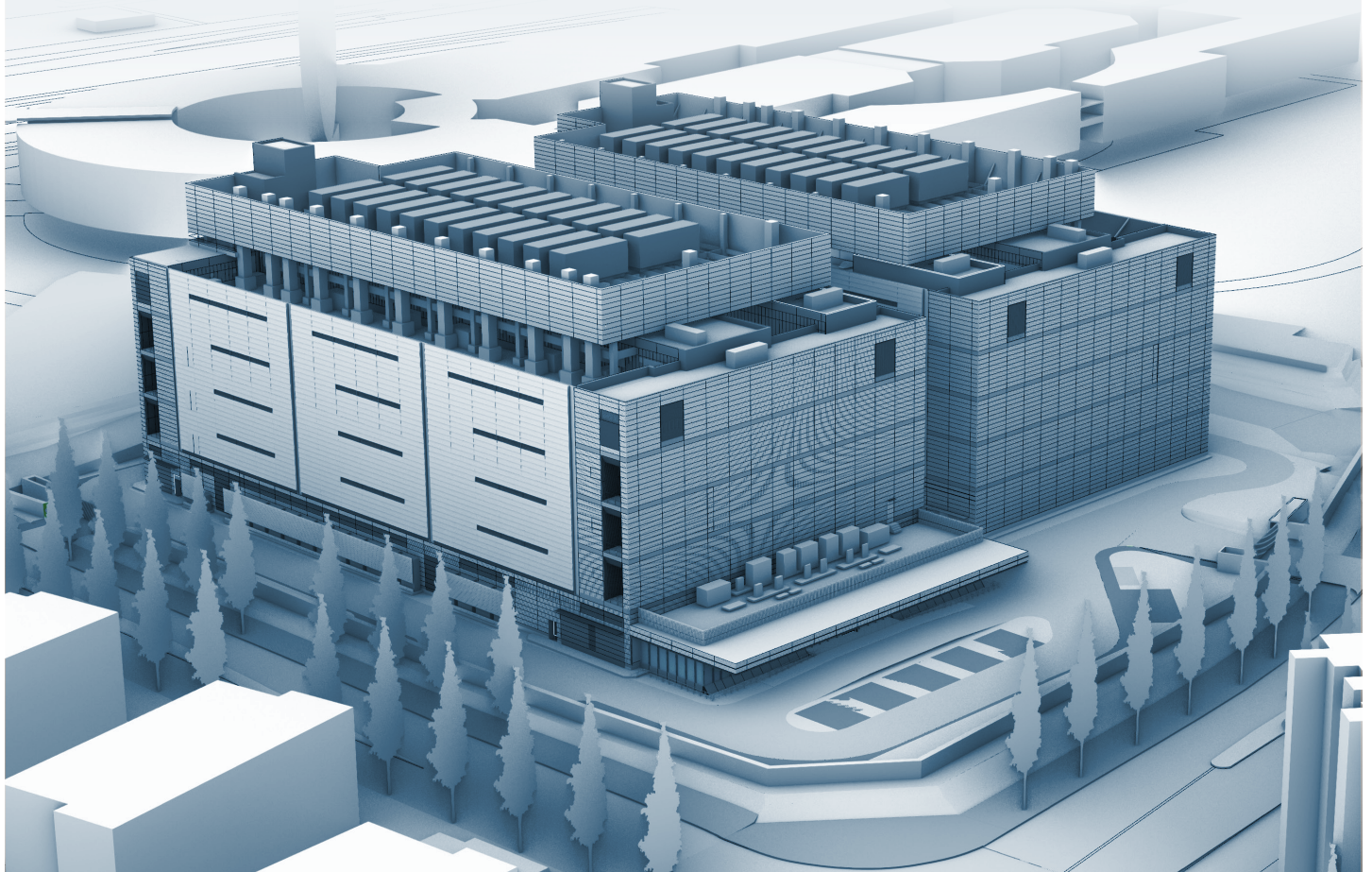
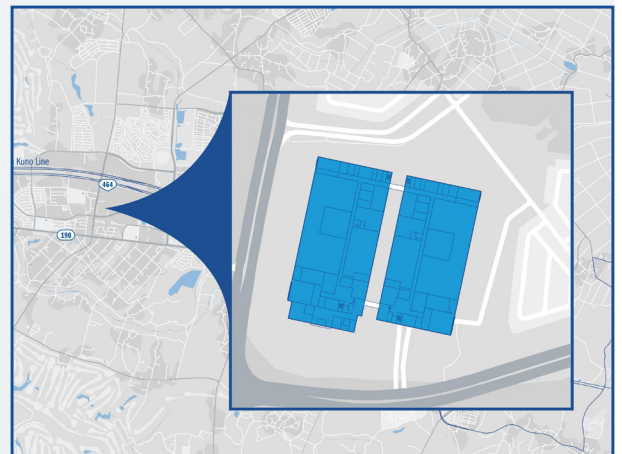
IDEAL LOCATION

The Inzai area is experiencing significant growth in hyperscale data centers, making it an optimal location for business expansion.

36 MEGAWATT CAMPUS

- On-Demand Capacity: Flexible capacity provision as needed
- Scalability: Smooth expansion in line with business growth
- High Reliability: Providing stable services to global standards
- Advanced Security: Industry-leading security management
- Future-Oriented Design: High rack density and floor load capacity
- Comprehensive Connectivity: Stable connectivity through high-capacity dark fiber and long-distance carriers

The TKY01 Campus serves as an ideal foundation for technology innovators, supporting rapid and reliable growth. Join us as we step into the world of technology that shapes the future.



OPTIONS AVAILABLE

READY STACK

COMMISSIONED CAPACITY

PLUG IN AND GO

READYSTACK is a data hall with pre-configured racks, connectivity, and power, allowing you to simply bring in your equipment and start using it immediately.

HYPER STACK

BUILD-TO-SUIT

BUILT TO SCALE

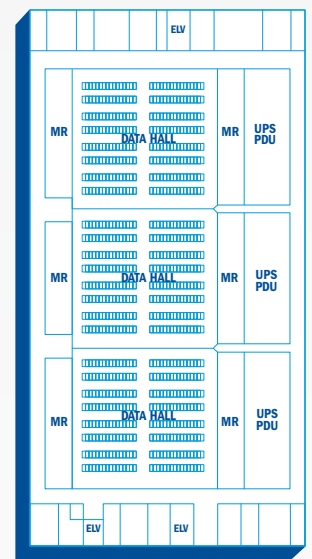
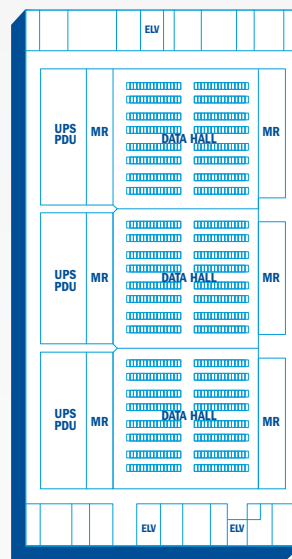
With HYPERSTACK's build-to-suit options, we offer flexible customization and solutions tailored to your growth needs.

POWER STACK

POWERED SHELL

A FLEXIBLE FOUNDATION

POWERSTACK is a customizable base building that can be rapidly deployed, with fiber infrastructure in place and ready for immediate use.



SPECIFICATIONS

SITE AREA

- 2.3 hectares (6 acres)

TOTAL POWER CAPACITY

- 36 MW campus total capacity

BUILDING STRUCTURE

- Seismic base isolation, high-strength steel CFT

POWER SUPPLY EQUIPMENT

- Dual 66kV high-voltage lines
- Electrical Redundancy (Generators / UPS)
- N+2 block redundancy

FUEL STORAGE

- Minimum 24 hours of capacity

BMS CONTROL

- Access to BMS portal

AIR CONDITIONING

- N+2 redundancy, high-efficiency air-cooled chillers
- N+2 redundancy, Fan Wall Units

SECURITY

- 24x7 staffed monitoring and security
- Dual-authentication biometric access
- High-performance CCTV

FIRE PROTECTION

- Dual smoke detectors including VESDA/HSSD
- Clean agent gas fire suppression system